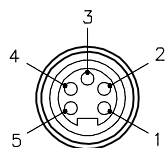
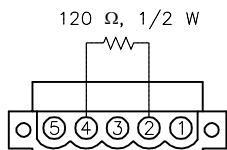


MALE END VIEW

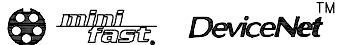


- 1 = BARE (SHIELD)
- 2 = RED (+ VOLTAGE)
- 3 = BLACK (- VOLTAGE)
- 4 = WHITE (CAN_H)
- 5 = BLUE (CAN_L)

FEMALE END VIEW

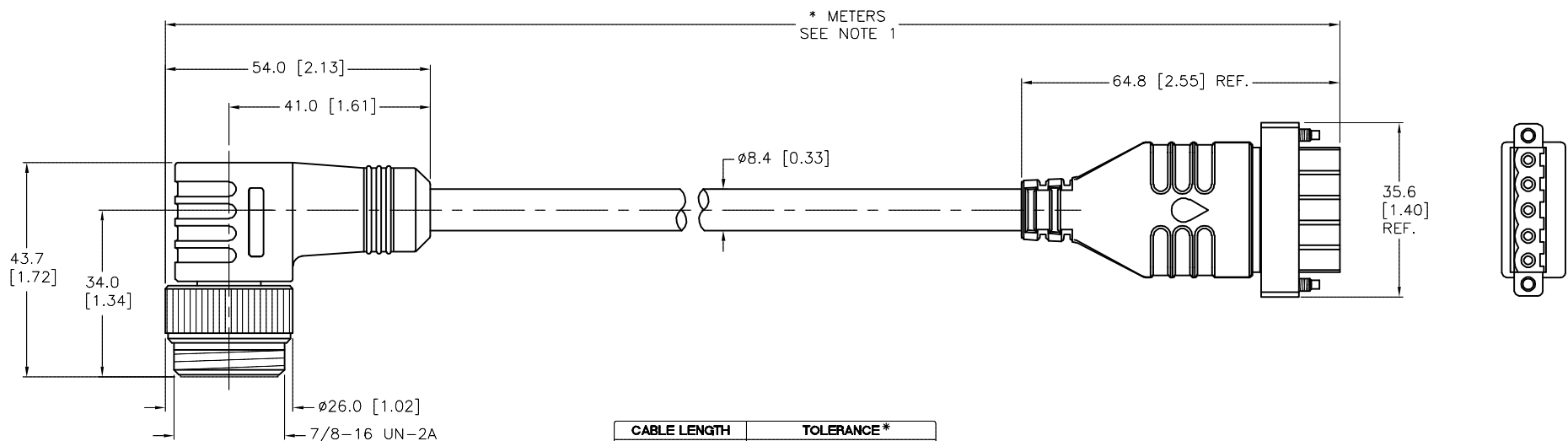


- 1 = VOLTAGE (-)
- 2 = CAN_L
- 3 = SHIELD
- 4 = CAN_H
- 5 = VOLTAGE (+)



SPECIFICATIONS

CONTACT CARRIER MATERIAL/COLOR (CBC5)	PBT-UL94-VO/BLACK
MOLDED HEAD MATERIAL/COLOR (CBC5)	TPU/BLACK
CONTACT CARRIER MATERIAL/COLOR (MINI)	TPU/BLUE-GRAY
MOLDED HEAD MATERIAL/COLOR (MINI)	TPU/BLUE-GRAY
CONTACT MATERIAL/PLATING (MINI)	BRASS/GOLD
COUPLING NUT MATERIAL/PLATING (MINI)	BRASS/NICKEL
RATED CURRENT [A]	7.0 A
RATED VOLTAGE [V]	250 V (7.6 VDC MAX. ON PINS WITH RESISTOR)
OUTER JACKET MATERIAL/COLOR	PVC/GRAY
CONDUCTOR INSULATION MATERIAL	PE (DATA), PVC (POWER)
NUMBER OF CONDUCTORS [AWG]	2x16 AWG, 2x20 AWG, 20 AWG DRAIN
SHIELD	FOIL (PAIRS), FOIL (OVERALL)
TEMPERATURE RANGE	-40°C to +80°C (-40°F to +176°F)
PROTECTION CLASS	MEETS NEMA 1,3,4,6P AND IEC IP67 (IP20: CBC5)



CABLE LENGTH	TOLERANCE*
ALL LENGTHS	+ 4% (OR 50mm) OF LENGTH - 0% (OR 0mm) OF LENGTH WHICHEVER IS GREATER
STRIP LENGTH	TOLERANCE*
0-7mm	±0.5mm
8-29mm	±1.0mm
30-49mm	±2.0mm
50-69mm	±3.0mm
70-100mm	±4.0mm
OVER 100mm	±5.0mm

*UNLESS OTHERWISE SPECIFIED

SOURCE DRAWING - FOR REFERENCE ONLY

NOTES:
1. "*" INDICATES CABLE LENGTH IN METERS. CONTACT TURCK TO ORDER SPECIFIC LENGTHS.

RELATED DOCUMENTS 1. 2. 3. 4.	3RD ANGLE PROJECTION 	THIS DRAWING IS CONFIDENTIAL AND THE PROPERTY OF TURCK INC. USE OF THIS DOCUMENT WITHOUT WRITTEN PERMISSION IS PROHIBITED.		3000 CAMPUS DRIVE MINNEAPOLIS, MN 55441 1-800-544-7769 (763) 553-7300 (763) 553-0708 fax www.turck.us	
	MATERIAL	DRFT RDS	DATE 09/15/03	DESCRIPTION WSM CBC5/TR 5711-*M	
FINISH	ALL DIMENSIONS DISPLAYED ON THIS DRAWING ARE FOR REFERENCE ONLY	APVD	SCALE 1=1.3	IDENTIFICATION NO.	
CONTACT TURCK FOR MORE INFORMATION		UNIT OF MEASUREMENT MILLIMETER [INCH]		REV H	
DO NOT SCALE THIS DRAWING		FILE: 777005068		SHEET 1 OF 1	

H	UPDATE RATED CURRENT	NF	10/05/17	62349
REV	DESCRIPTION	BY	DATE	ECO NO.